



AGENDA

- Hydrology and 2026 Water Supply
- Current Assessments and Toll Rate
- Kern River Litigation Update
- General SGMA and GSP Updates
- Land IQ ET and Precipitation Tool for Irrigation Management
- Golden Mussel Infestation and Treatment Plan

Directors

Kevin Andrew – President
Joel Ackerknecht – Vice President
Robert Holtermann – Secretary-Treasurer
Winn Glende
Monte Mitchell

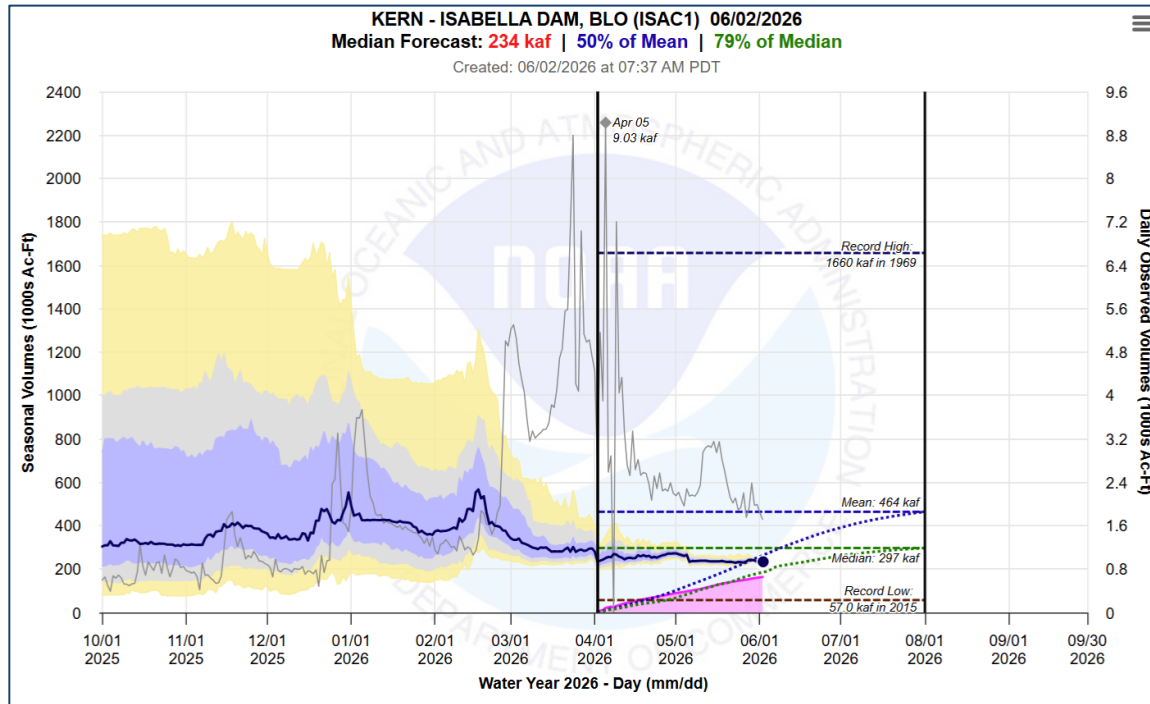
Management Staff

David Hampton – General Manager
Ram Venkatesan – Deputy General Manager
Marinelle Duarosan – Controller/Office Manager
Heather Williams – O & M Superintendent



Hydrology and 2026 Water Supply:

- Current forecast for the April through July (A-J) snowmelt runoff is 50% of historical average per California-Nevada River Forecast Center (CNRFC) and 54% per DWR's Bulletin 120.



DAYS OF MONTH	MAY 01		MAY 12		MAY 19		MAY 26			
	AJ VOL	% AVG	AJ VOL	% AVG	AJ VOL	% AVG	AJ VOL	% AVG	AJ VOL	% AVG
WATERSHED PERCENTILES										
Kings River below Pine Flat Reservoir										Average = 1,192
90% Exceedance	560	47	560	47	580	49	550	46		
50% Exceedance	650	55	640	54	640	54	610	51		
10% Exceedance	870	73	810	68	760	64	700	59		
Kaweah River below Terminus Reservoir										Average = 276
90% Exceedance	115	42	115	42	115	42	100	36		
50% Exceedance	135	49	130	47	130	47	115	42		
10% Exceedance	160	58	150	54	145	53	130	47		
Tule River below Lake Success										Average = 60
90% Exceedance	15	25	16	27	17	28	18	30		
50% Exceedance	19	32	19	32	19	32	20	33		
10% Exceedance	28	47	26	43	26	43	25	42		
Kern River, Inflow to Lake Isabella										Average = 441
90% Exceedance	250	57	255	58	245	56	215	49		
50% Exceedance	290	66	290	66	270	61	240	54		
10% Exceedance	330	75	325	74	300	68	260	59		
NOTES										

- But runoff for the year including A-J is looking better.



Hydrology and 2026 Water Supply:

- The solid storm activity and unusually warm weather during the 2026 Water Year (Oct – Sept) caused earlier than usual runoff that was captured in Isabella.

October 2025:	140%	January 2026:	156%
November 2025:	143%	February 2026:	120%
December 2025:	119%	March 2026:	209%
		April 2026:	87%

- Current Lake Isabella storage level is at about 365,000 AF and North Kern’s share is about 97,000 AF at the start of June.
- Current rate of Kern River entitlement is about 150 AF per day, plus North Kern will receive an additional 8,000 AF from the City of Bakersfield.
- So far in 2026, roughly 40,000 AF of river water has been brought into the District.

Current Assessments and Toll Rate:

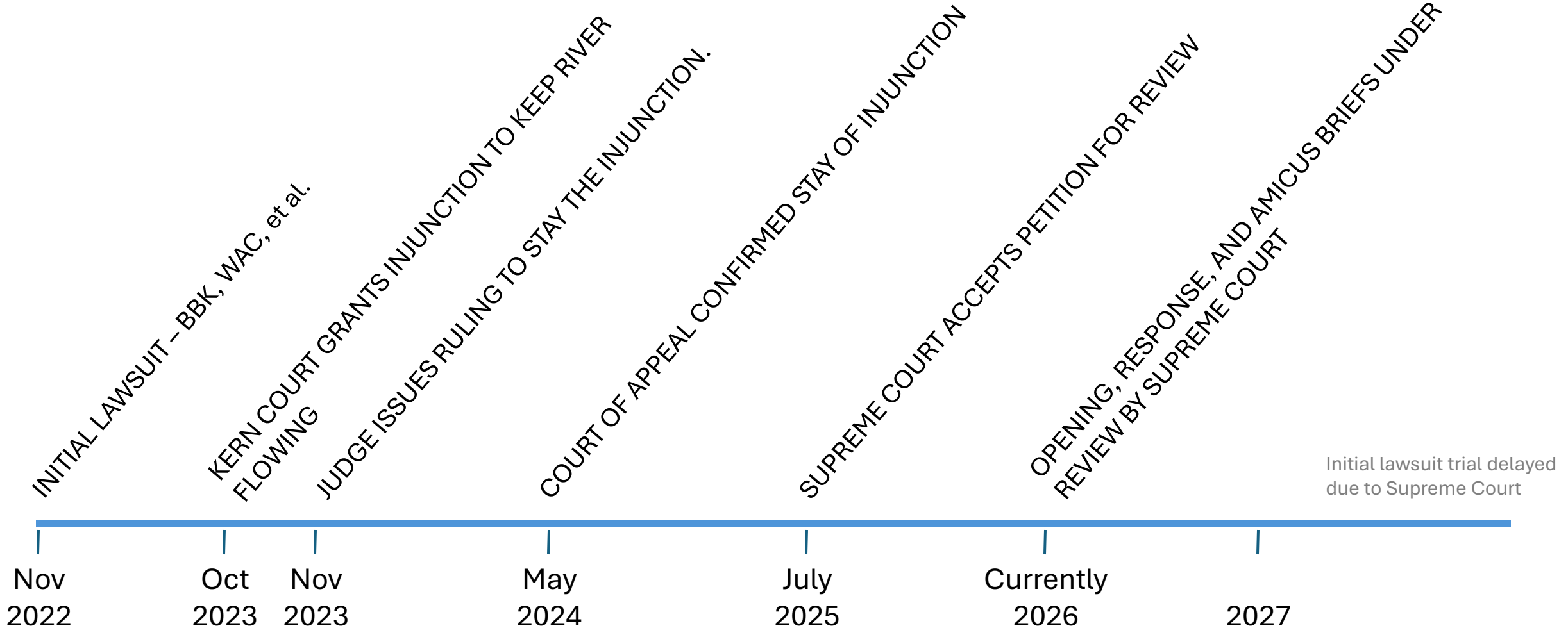
- Current District routing estimates that operations will utilize about 130,000 AF of surface water supplies and will need to pump about 48,000 AF of in-district groundwater.
- District assessments are levied to recover fixed cost for administration, operations, maintenance, legal, and etc.
- Toll rates are to recover the variable costs associated with delivering water to the Landowners and the energy cost is the primary driver, which is determined by how much groundwater needs to be pumped.
- Pumping costs are dependent on hydrology and can be highly variable from year to year, \$100/AF to \$250/AF or more, but the District has a Rate Stabilization Reserve to help reduce those swings and reduce the high end rate impacts.

Current Assessments and Toll Rate:

- District Assessments to recover 2025 fixed costs (~\$10M) for Class 1 is \$188/Acre and Class 2 is \$176/Acre, primarily for debt service, administration, weed control, system maintenance, and system operations.
- As of March 1, 2026, and later confirmed with Board approval of the amended budget at the April Board meeting, the toll rate is \$130 per AF.
- The estimated variable cost for 2026 is roughly \$15M, which is about \$9M of that is due to energy costs, and with the current Toll Rate of \$130/AF, that would fund an additional \$2.7M in reserve funds (Note: this is prior to the golden mussel issue).
- The solar projects will offset about \$2M this year, reducing the cost from \$11M to the \$9M.
- The toll rate can be revised at the Board's discretion.



Kern River Litigation Update:





General SGMA and GSP Updates:

- Significant amount of time and resources were spent to update the Kern Subbasin Groundwater Sustainability Plan (GSP), in a large scale coordinated effort, to avoid probation by the State Water Resources Control Board.
- Sustainable Management Criteria (SMCs) methodologies were coordinated, Minimum Thresholds (MTs) were raised, a mitigation plan for impacted drinking water wells was developed, the well inventory was updated, and the well monitoring network was scrutinized to determine what areas might have monitoring or data gaps.
- The Kern Subbasin was returned to DWR for their oversight and review of the plan, starting a new 75-day comment period on February 4, 2026.
- GSAs are implementing the plan as required, their Projects & Management Actions, and collectively updating the plan to incorporate new monitoring wells to fill data gaps, revising the drinking well mitigation plan to address State small drinking water systems.

General SGMA and GSP Updates:

- Also, updating the Action Plan to address the recently final approved DWR Best Management Practices for Subsidence
- The Subbasin costs to update the Kern GSP in order to avoid probation was roughly \$1.5M and North Kern's share was about \$75,000.
- The estimated costs for continued implementation and revisions to the GSP and appendices are approximately \$800,000 for 2026 and North Kern's share will be about \$48,000.
- Other items to note:
 - Annual Report was submitted as required, available online.
 - Specific to North Kern, groundwater levels remain well above the MTs, but there was a water quality exceedance at RMW-148 for TCP.
 - An investigation is currently being conducted by a third-party to determine if the exceedance was due to GSA activities. A notice will be provided to domestic well owners within a 3-mile radius.

Land IQ ET and Precipitation Tool for Irrigation Management:

- District has been using Land IQ for district wide evapotranspiration and precipitation data to help determine crop demand and support water budget calculations for SGMA.
- Uses remote satellite data to calculate monthly and annual values for the full Kern Subbasin area (Ag areas only).
- Some Ag districts or GSAs use this data to allocate supplies and to support landowner charges or fees.
- Land IQ has developed a tool that can provide this information on a daily basis within 24 hours. Please see provided handouts.
- Each landowner will have their own private account, can log in online, and will be able to see the data for only their own parcels.
- This would also allow the District to see the daily district wide information and act as the administrator for the tool.
- Contract would be with the District and add about \$0.61/acre to the annual assessments.
- **Are Landowners interested and want access to this tool?**

Golden Mussel Infestation and Treatment Plan:

- Golden mussels were first detected in California by DWR in October of 2024 in the Delta and shortly after discovered in the California Aqueduct.
- The mussels are highly invasive mollusks that rapidly reproduce and spread and have already impacted CA water ways.
- In December 2025, Arvin-Edison and Wheeler Ridge discovered they had a golden mussel infestation, which both districts were taking Aqueduct water.
- Earlier in Aug & Sep 2025, North Kern received SWID banking water via the Aqueduct, Cross Valley Canal, NK's CVC intertie, then through the Calloway Canal. That water was moved through North Kern's system.
- Upon hearing the local infestation news, District staff began monitoring our Calloway Canal and Intertie using visual inspections and putting steel test plates in the water. Our focus was on the entry areas into the District.
- Following the discontinuation of Calloway Canal operations, staff continued monitoring as water levels receded, and no detections were reported.

Golden Mussel Infestation and Treatment Plan:

- In the first week of May, during maintenance activities at the head of the 8-1, low levels of the mussels were discovered.
- As staff moved downstream through our system, pulling track racks and pumps, the infestation grew increasing worse.
- Don't understand what caused the growing infestation levels down stream but can probably attribute it to a combination of mixing with colder river water in the Lerdo Canal, typical algae treatments more focused in the upstream areas, and calcium input from groundwater wells.
- Upon closer inspection in the invert of the CVC Intertie, the juvenile mussels were covered and hidden by the typical silt that remains in the bottom of a canal.

Golden Mussel Infestation and Treatment Plan:



Golden Mussel Infestation and Treatment Plan:



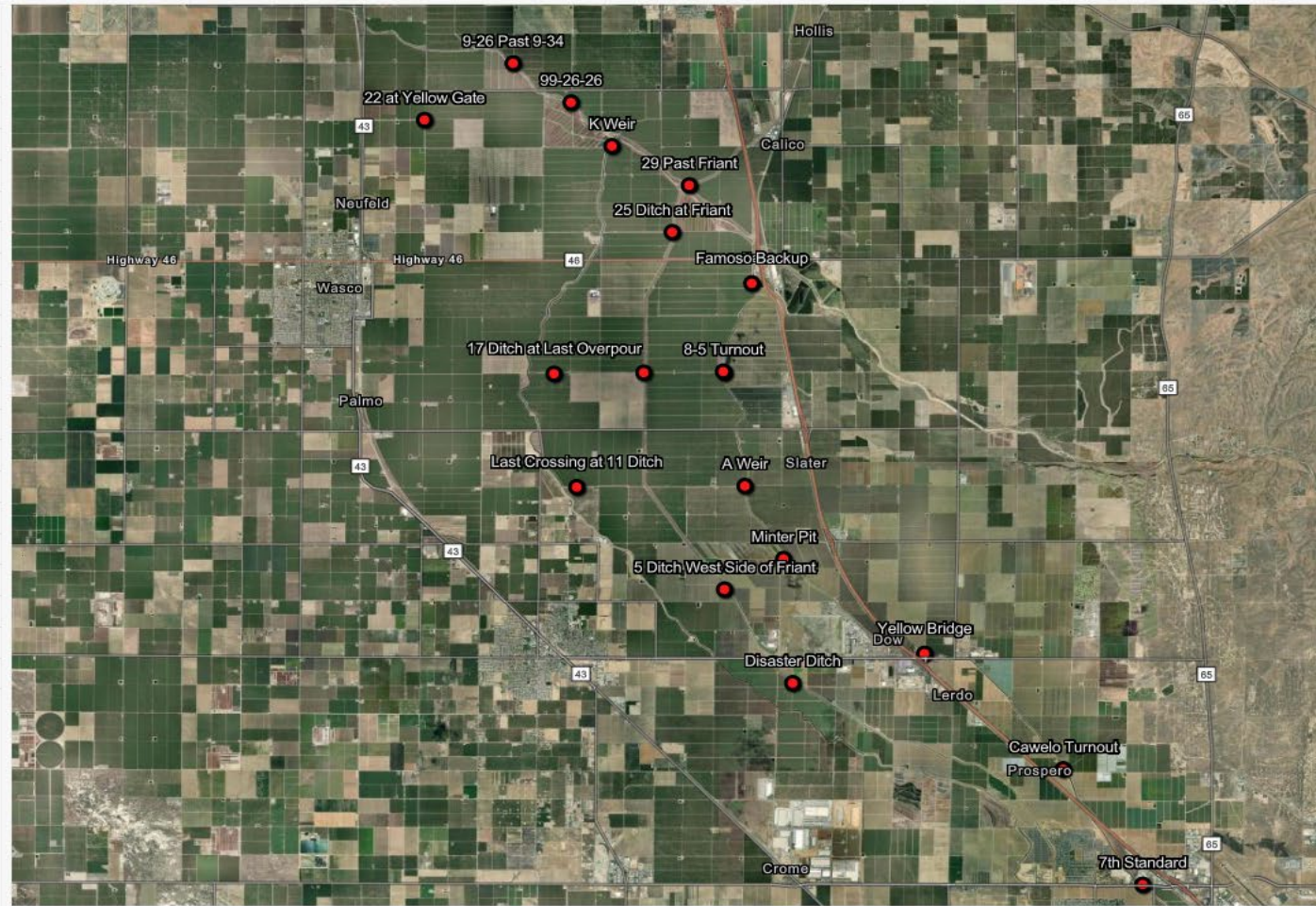
Golden Mussel Infestation and Treatment Plan:

- Staff immediately started reaching out to applicators and chemical distributors; Clean Lakes, Green Leaf, Blue Tech, and MChem to consider using Earth Tech QZ, Lake Life, and Natrix CA.
- Brought information to the Board of Directors at the May 19 Board meeting and the Directors authorized engaging Blue Tech to use Lake Life, which did not require a long-term contract commitment and the option to purchase the chemical dispensing stations for District staff applicators to take over the process once established.
- Initial estimated treatment costs were on the order of \$3M, with the understanding this was for one treatment location and there would be substantially more stations required downstream.
- Currently setting up for about 20 stations and will reduce if appropriate.
- There will be a dashboard available to the Landowners so they can understand the concentration of copper levels in the water.

Dashboard Map

Site List

Search...
● Yellow Bridge - (0.52 ppm) (0.51 ppm) (0.43 ppm)
● 7th Standard - (ppm) (ppm) (ppm)
● Cawelo Turnout - (0.64 ppm) (0.58 ppm) (0.56 ppm)
● Disaster Ditch - (ppm) (ppm) (ppm)
● 5 Ditch West Side of Friant - (ppm) (ppm) (ppm)
● Minter Pit - (ppm) (ppm) (ppm)
● A Weir - (ppm) (ppm) (ppm)
● Last Crossing at 11 Ditch - (ppm) (ppm) (ppm)
● Lerdo at Wright Field - (ppm) (ppm) (ppm)
● 8-5 Turnout - (ppm) (ppm) (ppm)
● 17 Ditch at 5-07 Weir - (ppm) (ppm) (ppm)
● 17 Ditch at Last Overpour - (ppm) (ppm) (ppm)
● Famoso Backup - (ppm) (ppm) (ppm)
● 25 Ditch at Friant - (ppm) (ppm) (ppm)
● 29 Past Friant - (ppm) (ppm) (ppm)
● K Weir - (ppm) (ppm) (ppm)
● 99-26-26 - (ppm) (ppm) (ppm)
● 22 at Yellow Gate - (ppm) (ppm) (ppm)
● 9-26 Past 9-34 - (ppm) (ppm) (ppm)
● Elmo - (ppm) (ppm) (ppm)



California State Parks | Earthstar Geographics | Esri | TomTom | Garmin | SaleGraph | GeoTechnologies, Inc | METI/NASA | USGS | Copyright information varies by provider. For more informati... Powered by Esri

LANDOWNER MEETING

JUNE 4, 2026

33380 CAWELO AVE, BAKERSFIELD, CA 93308
www.northkernwsd.com



Picture of Station example



Golden Mussel Infestation and Treatment Plan:

- Targeting eradication of adult mussels: 0.3 ppm in the water for at least a period of 21 days.
- This is going to take well over 155,000 gallons of chemicals at our irrigation system flow rates and cost well over \$5M for one month of treatment
- Goal is to obtain full mortality rate for the mussels in the District, confirm kill with control group of mussels throughout the District, cease treatment, monitor for any future detections, and avoid water from the CVC.
- Kern River is free of mussels for now. Started up and participating in Golden Mussel awareness campaign (multi agency participation).
- Friant Kern Canal reaches within the District have detected low level mussels, any Friant water brought into the District will require treatment for the larvae (veligers) at 0.18 ppm of copper.
- Cost of current treatment getting contributions from SWID and potentially Cawelo.
- Additional future treatments are most likely. Hopefully, districts can get financial support from government agencies (state, federal, Kern Hazard Mitigation, etc.)

LANDOWNER MEETING

JUNE 4, 2026

33380 CAWELO AVE, BAKERSFIELD, CA 93308
www.northkernwsd.com



Questions?