



WATER STORAGE DISTRICT

APRIL 2025 NEWSLETTER

www.northkernwsd.com

33380 Cawelo Ave, Bakersfield, CA 93308
nkwsd@northkernwsd.com, (661) 393-2696



Just Average?

Our snowpack is shaping up to be just below historical average in the Kern River watershed. As of April 8, 2025, DWR's Bulletin 120 is forecasting an 89% of average runoff for the April through July period. <https://cdec.water.ca.gov/snow/bulletin120/>

THE DISTRICT HAS A NEW LOOK!



CURRENT STATS AND INFO

(April 8, 2025)

Total Lake	
Isabella Storage:	245,000 AF
Flows Into Lake:	1,200 CFS
Dam Outflow:	412 CFS
Class I BSC:	\$179 /acre
Class II BSC:	\$171 /acre
RRID Adm. BSC:	\$24.10/ acre
RRID Prjct. BSC:	\$154.60 /acre
Toll Rate:	\$200 / AF

SGMA



KERN COUNTY SUBBASIN

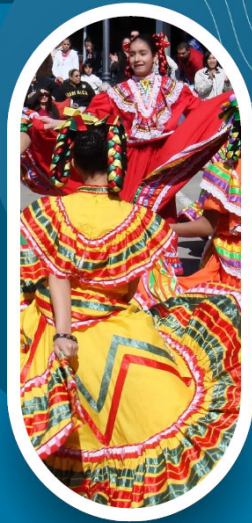
COMMUNITY POP-UP EVENT

Held at Shafter's upcoming
Cinco de Mayo festival

WHERE?
Downtown Shafter
Near James St. & Central Ave.
Shafter, CA 93263

WHEN?
Saturday, May 3
10:00 AM - 2:00 PM

WHY?
Engage with your Groundwater
Sustainability Agency—your
voice shapes water solutions.

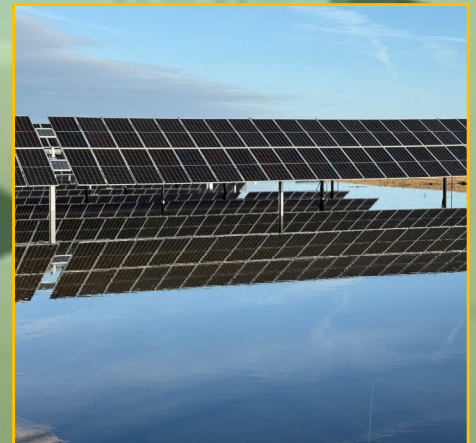


www.KernGSP.com
comments@KernGSP.com

Reminder:
Water orders
need to be
provided 48
hours in
advance.
(661) 393-3361

CATCHING SOME SUN!

Have you seen
our solar
projects? North
Kern and
WhitePines
have teamed up
to save on rising
PG&E cost!



NEWS: 5th District Court of Appeal Reverses Injunction!

On April 2, 2024, the Appellate Court reversed a preliminary injunction by the Kern County Superior Court that required water to remain in the river channel through Bakersfield. "The Appellants appreciate today's decision from the Court of Appeal..." - Scott Kuney, attorney for North Kern Water Storage District